

2 in

25 st

West

Gutter crossing st

26 st

curb

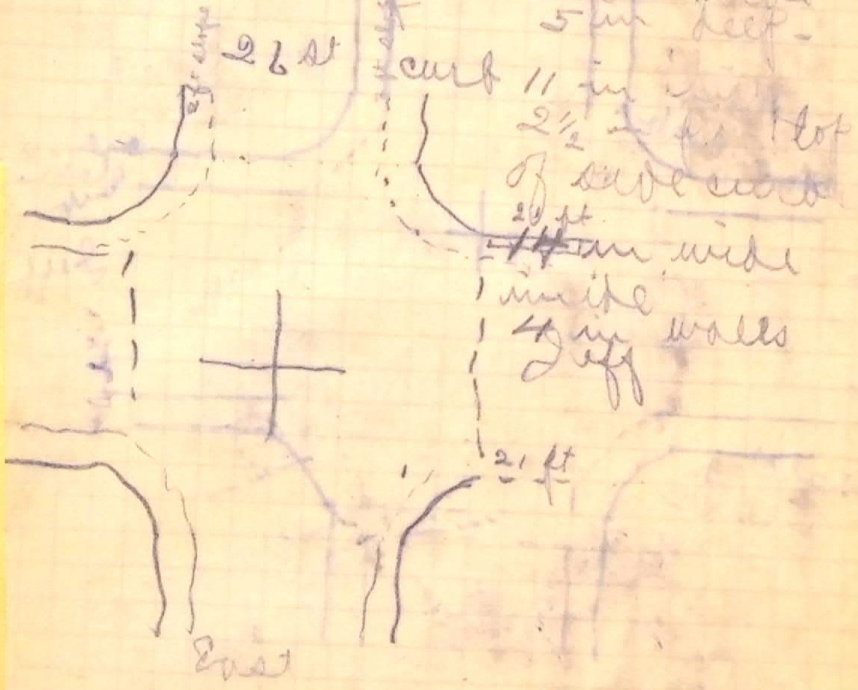
26 in wide  
5 in deep

11 in  
2 1/2 in  
of curb curb

20 ft  
14 in wide  
inside  
4 in walls  
2 ft

21 ft

East



2 1/2 in from top of curb  
4 in curb  
9 in water way  
5 in gutter

Shutter in water